

ESTIMATE

Name of Work :-

PROPOSED CONSTRUCTION OF MACHINERY SHEAD FOR THE
DIVIT FARMERPRODUCER COMPANY LIMITED, AT-MOHADI ,
TAH. MAUDA & , DIST.-NAGPUR . UNDER Hon. BALASAHEB
THACKERAY AGRIBUSINESS RURAL TRANSFORMATION (SMART)
PROJECT

AREA OF MACHINERY SHEAD :- 1600.00 SQ.FT.

Estimated Cost

Rs.- 3071600.00

***Rs. Thirty lakh Seventy One Thousand
Six hundred Only***

ESTIMATE

TO WHOM SO EVER IT MAY CONCERN

Name of Work:-

PROPOSED CONSTRUCTION OF MACHINERY SHED FOR THE "DIVIT FARMER PRODUCER COMPANY LIMITED", AT-MOHADI, TAH. MAUDA & DIST- NAGPUR . UNDER Hon. BALASAHEB THACKERAY AGRIBUSINESS RURAL TRANSFORMATION (SMART) PROJECT

Estimated Cost Rs.

3071600.00

Estimate Prepared By:- Mr. Vishal M. Tembhare,
Civil Engineer, Planner
Regd. No. MCT 11 /

GENERAL REPORT

Necessity :- There is need to plant Shed Building on his own land in Village. Therefore on Request of owner this estimate have been prepared

Provisions :- *Following provisions are made in the estimate.*

CC M10 for Foundation on 80 mm soling
CC M20 For Column Footing, RCC Column, Beam, Chajja, With TMT Reinforcement of Various sizes.
BBm In Foundation & In Superstructure in CM 1:5
Cement Ploster in CM to Wall surfaces
C.C. Flooring for shed and Room
White wash to internal /External wall surfaces,
and other necessary provisions are made in estimate.

Rates & Specification:

The rates are adopted for preparation of the estimate as per current State Scheduled Ratej SSR) of Govt of Maharashtra for year 2022-2023 w.ef. 01-07-2022) And work will be executed as per direction of Engineer Incharge, Standard specification.

Prepared By

Signature of Owner

Sanctioning Authority

PROPOSED CONSTRUCTION OF MACHINERY SHED FOR THE "DIVIT FARMER PRODUCER COMPANY LIMITED", AT-MOHADI, TAH. MAUDA & DIST- NAGPUR . UNDER Hon. BALASAHEB THACKERAY AGRIBUSINESS RURAL TRANSFORMATION (SMART) PROJECT

RECAPITULATION - SHEET

1)	CIVIL WORK OF WH BUILDING	Rs.	2552273.67
2)	ADD FOR ROYALTY	Rs.	66805.13
3)	ADD FOR MATERIAL LAB TESTING	Rs.	38115.00
4)	ADD FOR ELECTRIFICATION	Rs.	73107.00
TOTAL AMOUNT (A)		Rs.	2730301.00

TOTAL AMOUNT

5)	ADD 12% FOR GST FROM (A)	Rs.	327636.12
6)	ADD 0.5% FOR LABOUR INSURANCE	Rs.	13651.51
TOTAL COST OF ESTIMATE		Rs.	3071600.00

ABSTRACT SHEET

Name of Work :-

PROPOSED CONSTRUCTION OF MACHINERY SHEAD FOR THE "DIVIT FARMER PRODUCER COMPANY LIMITED",
AT-MOHADI, TAH. MAUDA & DIST- NAGPUR . UNDER Hon. BALASAHEB THACKERAY AGRIBUSINESS RURAL
TRANSFORMATION (SMART) PROJECT

ABSTRACT

Sr no.	SSR Item No.	Item of Work	Quantity	Rate	Unit	Amount
(A) BUILDING WORK						
1	SSR Item No. 21.01 Page No.153 (239.00)	Excavation for foundation in earth, soil of all types , sand gravel and soft murum, including removing the excavated material up to a distance of 50 m beyond the building area and stacking and spreading as directed, dewatering preparing the bed for the foundation and necessary back filing, ramming, watering including shoring and strutting etc complete (Lift upto 1.5 m)				
			24.192	239.00	Cum	5781.89
2	SSR Item No. 21.40/ Page No.157 (1454.0)	Providing soling using 80 mm size trap metal in 15 cm. layer including filling voids with Crushed sand/grit, ramming. watering etc. complete				
			18.522	2438.88	Cum	45172.94
3	SSR Item No. 21.37/ Page No.157 (599.00)	Filing in plinth and floors with contractors material /brought from outside and approved by Engineer incharge in layers of 15 cm to 20 cm including watering and compaction etc complete				
			137.07	599.00	Cum	82104.93
4	SSR Item No. 24.01/ Page No.175 (5830.0)	Providing and laying Cast in situ/ Ready Mix cement concrete in M-10 of trap/ granite/ quartzite/ gneiss metal for foundation and bedding including bailing out water, formwork, laying pumping, compacting, roughening them if special finish is to be provided, finishing if required and curing complete with fully automatic micro processor based PLC with SCADA enabled reversible Drum Type mixer/concrete Batch mix plant (Pan mixer) etc complete. With natural sand/V SI quality Artificial Sand				
			17.8884	6756.51	Cum	120863.15

5	SSR Item No. 25.11/ Page No.178 (7104.0)	Providing and laying in situ/ Ready Mix cement concrete M 20 of trap/graniite /quartzile gneiss metal for R.C.C. work in foundations like raft, strip foundations, grillage and footings of R.C.C. columns and steel stanchions etc including balling out water, formwork, laying/pumping cover blocks, compaction and curing roughening the surface if special finish is to be provided (Excluding reinforcement and structural steel) etc. complete, with fully automatic micro processor based PLC with SCADA enabled reversible Drum Type mixer concrete Batch mix plant (Pan mixer) etc. complete. With natural sand/V S. I quality Artificial Sand				
(SSR Item No. 25.11/ Page No.133) 6666.00			4.2	7863.86	Cum	33028.21
6	SSR Item No. 25.31/ Page No.179 (13783.0)	Providing and laying Castin nitu/Reaily Mix cement concrete M-20 of trap/ granite /quartzite gneissmetul for R.C.C. columns as per detailed designs and drawing or as directed including centering, formwork, cover blocks, laying pumping compaction finishing the formed surfaces. with cement mortar 1:3 of sufficient minimum thickness to give a smooth and even surface ar roughening if special finish is to be provided and curing ete complete (Espluding reinforcement and structural steel) with fully automatic micro processor based PLC with SCADA enabled reversible Drum Type mixer/ concrete 8atch mix plant (Pan mixer) etc complete. With natural sand/V.SI quality Artificial Sand				
			6.76	14142.12	Cum	95629.02
7	SSR Item No. 25.50/ Page No.181 (12269.0)	Providing and laying Cast in situ/Ready Mix cement concrete M-20 of trap/ granite /quartzite/ gneiss matal for R.C.C. beams and lintels as per detailed designs and drawings or as directed including centering, formwork, cover blocks, laying/pumping, compactionand roughening the surface if special finish is to be provided and cuning etc. complete (Excluding reinforcement and structural steel) with tuby automatic micro processor based PLC with SCADA enabled reversible Drum Type micer/ concrete Batch mix plant (Pan moxer) etc complete With natural sand/V.SI. quality Artificial Sand				
			11.660862	12269.00	Cum	143067.12

8	SSR Item No. 26.05/ Page No.184 (13932.0)	Providing and laying Cast in situ Ready Mix concrete M-20 of trap/ granite/ quartzitel gneiss metal for R.C.C. chajja as per detailed design and drawings including centering, formwork, cover blocks compacting, curing. finishing and toughening the surface if special finish is to be provided and curing complete. (Excluding reinforcement and structural steel) with fully automatic micro processor based PLC with SCADA enabled reversible Drum Type mixer/ concrete Batch mix plant (Pan mixer) etc complete. With natural sand/Vs1 quality Artificial Sand				
		(SSR Item No. 26.05/ Page No.137) 13111.0	3.5016	14282.18	Cum	50010.48
9	SSR em No. 24.16/ Page No.177 (6359.0)	Prodding and Mying Cast in situ/Ready Mix cement concrete M-15 of trap/ granite/quartzite/gneiss metal for coping to plinth or parapet , moulded or chamfered as per drawing or as directed including steel centering, plywood/ steel formwork compacting roughening them if special tirish is to the provided, finishing uneven and honeycombed surface and curing etc complets The Camant Mortar 13 plaster is consideraid for rendering uneven and honeycombed surface only Newly laid contiste shall be covered by gimny bag, plastic, tarpaulin etc (Woodet centaning will not be allowed)				
			1.15828	7163.56	Cum	8297.41
10	SSR Item No. 26.33/ Page No.188 (89703.0)	Providing and foong in position TMT-FE-500 bar reinforcement of various diameters for RCC pile caps footings, foundations, stats, beams columns, canopies staircase newels chajjas, litels pardis, copings, fins, wiches Jete an per detailed designs, drawings and schedules including cutting bending, hooking the tiers, biriding with wires or tack welding and supporting as required complete				
			3.4	89985.91	MT	305952.09
11	SSR Item No. 23.04/ Page No.173 (119459.0)	Providing structural steel work in trusses, other similar trussed purlins and members with all tracing gusset plates eto, as per detailed designs and drawings or as drected including cutting, fabricating, hoisting, erecting fixing in position, Making siveted bolted/welded connection and one cont of anticorrosive paint and over 2 costs of oil painting approved quality and thade etc complete				
			3.75	119459.00	MT	447971.25

12	SSR Item No. 38.36/ Page No.237 (1068.0)	Providing and fixing colour coated Zinalume (R) AZ150 (min 150 gms/sq.mt total on each side) profiled sheets for roofing . The feed material is manufactured out of nominal 045 mm Base Metal Thickness (BMT) (0.5 mm TCT), H strength steel with min 550 MPa yield strength, metallic hot dip coated with Aluminium-Zinc alloy (55% aluminium 43 4% zinc 1.6% silicon) with COLORBOND (R) steel quality super durable polyester paint coat (with inorganic pigment). The paint shall have a total coating thickness of nominal 35 um comprising of nominal 25 um exterior coat on top surface and nominal 10 um reverse coat on back surface Profile sheet shall have nom 950-1050 mm effective cover width and nominal 25-30 mm deep ribs with subtle square fluting in the five pan at nominal 180-250 mm center-to-center. The end rib				
			153.6	1068.00	Sqm	164044.80
13	SSR Item No. 27.01/ Page No.197 (7755.00)	Providing second class Burnt Brick masonry with conventional/ S type bricks in cement mortar 1:6 in foundations and plinth of inner walls in plinth edernal walls including bailing out water manually, striking joints on unexposed faces, raking out joints an exposed faces and watering etc. Complete				
			9.77408	8072.44	Cum	78900.67
14	SSR Item No. 27.05 Page No.197 (7994.00)	Providing second class Burnt Brick masonry with conventional/IS type bricks in cement mortar 1:6 in superstructure including striking joints raking out joints, watering				
			66.654	8175.44	Cum	544925.78
15	SSR Item No. 32.03/ Page No.209 (271.00)	Providing internal cement plaster 12mm thick in single coat. cement mortar 1:5 without neeru finish to concrete or brick surtaces, in all positions including scaffolding and curing etc.				
			284.76	278.83	Sqm	79399.63
16	SSR Item No. 32.06/ Page No.209 (375.00)	Providing interal cement plaster 20mm thick in two coats in cement mortar 1:5 without neeru finish, to concrete, brick surface all positions including scaffolding and curing etc. complete				
			284.76	375.00	Sqm	106785.00
17	SSR Item No.39.20/ Page No. 247 (4874.0)	Providing and fixing steel window of various sizes as per detaled drawing without hot dip zinc coating without ventilators.				
			6.48	4874.00	Sqm	31583.52

18	SSR Item No. 39.25 Page No. 249 (5308.0)	Providing and Fixing rolling shutter fabricated from steel laths of minimum thickness 0.9 mm with lock plate of 3.15 mm thickness red with 35 x 35 x 5 mm angle section had with sliding bet and handles for both sides, deep MS channel section of eph and hickness not less than 65 mm and 3.15 mm respectively with honds at arrangements MS. Bracket plate 300 x 300 x 3.15 mm male and shape with square bar, suspension shaft of in 32 mm diameter, hood Cover of M.S. sheet not less than 0.9 mm thickness and of any size at top and safety devices including mechanical gear operation arrangement consisting of worm gear wheels and worms high grade cast iron or mild steel and one coat of red lead primer etc. complete (I.S. 62481979) (Without mechanical gear)				
			12.48	5308.00	Sqm	66243.84
19	SSR Item No. 40.01/ Page No. 264 (2097.0)	Providing and fixing mild steel grill work for windows, ventilators etc. 20kg/Sqm as per drawing including fixtures, necessary welding and painting with one coats of anticorrosive paint and two coats of all painting complete.				
			5.4	2097.00	Sqm	11323.80
20	SSR Item No. 33.15 Page No. 214 (594.00)	Providing and laying cement concrete flooring 40mm thick with M15 cement concrete laid to proper level and slope in alternate bays including compactions, fitting joints, marking lines to give the appearance of tiles of 30cm x 30cm or other site laid diagonally square etc. Slicing smooth (with extra cement in any colour as directed and curing etc. complete. With Natural Sand				
			146.07	594.00	Sqm	86765.58
21	SSR Item No. 35.14/ Page No. 224 (78.0)	Providing and applying three coats of water proof cement paint of approved manufacture and of approved colour to new plastered surfaces including scaffolding if necessary, cleaning and preparing the surface, watering for two days etc. complete.				
			569.52	78.00	Sqm	44422.56
2552273.67						

PROPOSED CONSTRUCTION OF MACHINERY SHEAD FOR THE “DIVIT FARMER PRODUCER COMPANY LIMITED”, AT-MOHADI, TAH. MAUDA & DIST- NAGPUR . UNDER Hon. BALASAHEB THACKERAY AGRIBUSINESS RURAL TRANSFORMATION (SMART) PROJECT

ELECTRIFICATION ABSTRACT SHEET

Sr no.	Item of Work	Quantity	Unit	Rate	Amount
1	Supplying, erecting & terminating XLPE armoured cable 3 core 6 sq. mm. copper conductor continuous 5.48 sq. mm. (12 SWG) G.I. earth wire complete erected with glands & lugs, on wall/ trusses/pole or laid in provided trench/pipe as per specification no. CB-T/CU	10	RMT	290.00	2900.00
2	Making french of suitable width and depth In hard murum /tar road for laying provided LT cable up to and including 16 sq. mm complete as per specification no. CW.EXNCIR	6	RMT	205.00	1230.00
3	Making trench of suitable width and depth In soft sol for laying provided LT cable up to and including 14 sq.mm complete as per specification no, CW-EXN-CTR	6	RMT	175.00	1050.00
4	Supplying & erecting mains PVC unarmoured cable 1100 Volt grade ISI mark 3 core 6	60	RMT	135.00	8100.00
5	Supplying erecting weatherproof powder coated distribution board 4 way with 2 x 6/10 Amp S. P. M. C. B. with industrial two pin plug socket 10 A and 3 pin plug top 10 A with top cover necessary connection etc complete with approved make.	6	NOS.	1310.00	7860.00
6	Providing point wiring for street light with PVC unarmoured cable 1100Volt grade ISI mark 3 core 1.5 sqmm stranded/solid copper erected on wall with G. 1. Saddle duty painted @ 0.25 m C/C rigidly grouted in the wall with the help of plated screw including 4"x 4" M. S. box 2 way with epoxy painting. 7 Supplying & erecting 10-12W, 230v Integral type LED Lamp suitable for 8-22/E-27 base.	2	NOS.	1225.00	2450.00
7	Supplying & erecting 10.12W, 230V integral type LED Lamp suitable for B-22/E-27 base.	6	NOS.	230.00	1380.00
8	Supplying and erecting LED street light fitting suitable for 20 to 25W, with PF> 0.95 class IP 45 and above housing of pressure die cast aluminium alloy and heat sink extruded aluminium complete as per specification No FG-ODF/FLS	2	NOS.	2015.00	4030.00
9	Supplying and erecting street light Wall bracket made hom 40 mm. dia 8' class G.I. pipe 1.2 m in total length complete as per specification no. FG-BXT/WB	6	NOS.	715.00	4290.00
10	Providing earthing with galvanized iron earth plate size 60 x 60 x 0.6 cm complete with all materials, testing & recording the results as per specification no. EA-EP	0	NOS.	4350.00	0.00
11	Providing pipe type earthing with 40mm, dia. G.I. pipe or 20 mm dia. G.I. Rod complete with all materials or per specificallon no. EA-EP	1	NOS.	1450.00	1450.00
12	Supplying, erecting & marking DPMCB LA lo 32A, C-series (for motor/power) in provided distribution board as per specification no. SW-SWR/MCB	2	NOS.	495.00	990.00
13	Supplying, erecting & marking SPMCB 6A to 32A, B-series (for lighting) in provided distribution board as per specification no. 5W- SWR/MCB	2	NOS.	165.00	330.00

14	Supplying and erecting GI sheet 1.6 mm (16 SWG) to be used for fabrication of boxes panel boards etc. Including culling bending, delling, welding, riveting etc. and palling with one coal of red lead point and 2 coats of enamel paint.	2	SQM	2270.00	4540.00
15	Supplying and erecting marine plywood 18/19 mm thick fixed to well or on provided panel board with necessary materials such screws, wat fasteners, supports, nut bolts etc.	2	SQM	1345.00	2690.00
16	Supplying and erecting triple pole and (neutral dishibulion beard (TPNOB) surface/flush mounted suitable for SPMC of 12 ways on Iren/GI frame (horthzental busbar type) as per specification no. SW.SWR/MCBDA	0	NOS.	4735.00	0.00
17	Supplying & erecting GI. pipe 'A' class 25 10.00 mm dia. erecded for enclosing XLPE armoured cable on wall/ pole as per specification no. CB-CE	10	RMT	198.00	1980.00
18	Supplying & erecting G.I. pipe 'A' class 40 mm dia, erected for enclosing XLPE armoured cable on woll/pole as per specification no. CB-CE	19	RMT	305.00	5795.00
19	Supplying and laying (including excavation of suitable width & depth up to 90 cm) 75 mm outside dia. double woll corrugated pipes (DWC) of HDPE for enclosing cable below ground/road surface, to required depth complete.	12	RMT	230.00	2760.00
20	Supplying & erecting 18 guage M.S.Box powder coated (4"x4" 3 way for mains connection.	4	NOS.	85.00	340.00
21	Supplying & erecting Siemens type brass cable glands for 3 to 4 core & sq. mm./2 fo 4 core 10 sq mm. for XLPE armoured cable as per specification No. CB.GL	4	NOS.	60.00	240.00
22	Supplying shockproof type hand lamp with lamp holder, bulb/ lamp 100 W guarded glass and 30 mtr. 3 core PVC flexible	2	NOS.	1575.00	3150.00
23	Point wiring for independent plug in 20 mm ISI marked HMS PVC conduit with 1.5 sqmm (2+1E) FRLSH grade copper wire, flush type switch earthing and required accessories as per specification No: WG-PW/SW	2	NOS.	496.00	992.00
24	Supplying and erecting Street üght bracket made hom 25 mm. dia B' class G.I. Pipe, 0.6 m in length along with pole cap of 300 mm length and 80 mm dia duly welded with provided leads as per specification no. FG-BKT/BPC	2	NOS.	466.00	932.00
25	Supplying & erecting mains with 2 x 2.5 Sq.mm stranded copper PVC insulated wire with 2 x 1.5 Sqmm copper PVC wire in PVC casing-casing 20 mm on wall/celling	6	RMT	135.00	810.00
26	Supplying & erecting main with 2 x 4.00 Sq.mm stranded copper PVC insulated wire with 2 x 1.5 Sqmm copper PVC wire in PVC casing-caping on wall/celing	6	RMT	155.00	930.00
27	Supplying and erecting double pole switch surface type/ flush type 240V, 32A with Indicator lamp & fuse as per specification no. SW-SWR/BDP.	2	NOS.	179.00	358.00
28	Supplying and erecting double pole metal elad switch with HC type fuse and neutral nk 240V, 32A on iron/G1 trame as per specification ne, SW-SWR/MDP	2	NOS.	785.00	1570.00
29	Supplying & erecting 3W, 230V Integral type LED Lamp suitable for B-22/E-27 base.	8	NOS.	125.00	1000.00

30	Supplying and erecting T8 Fluorescent tube day light 1200 mm 36 W	16	NOS.	45.00	720.00
31	Supplying & erecting ready to use regular 1.00 T8 LED 18/20 tube light with polycarbonate body, heat sink, Integrated HF electronic driver complete & compatible to T8/T12 LED luminaire by disconnecting starter & ballast if necessary.	5	NOS.	635.00	3175.00
32	Supplying and erecting regular/ standard model ceiling fan of 900 /1050 mm, sweep complete erected in position as per specification no. FG-FN/CF	0	SQM	1895.00	0.00
33	Supplying and fixing wiremesh (Jali) cover suitable for fitting/fan or for any purpose. complete with necessary materials. The Jali cover shall be made from good quality G.I. wire mesh	4	NOS.	450.00	1800.00
34	Supplying and erecting ding dong/electronic musical type call bell with heavy duty coil suitable to operate on 230V A.C. supply erected on polished double wooden block/sunmica block of suitable size	1	NOS.	135.00	135.00
35	Supplying and erecting street light Wall bracket made from 25 mm. dia "B" class G.I. pipe 1.2 m in total length complete as per specification no. FG-BKT/WB	2	NOS.	575.00	1150.00
36	Supplying & erecting CRCA sheet metal one wayenclosures suitable for DP MCB/TP MCB /FP MCB erected on angle iron/GI frame complete.	2	NOS.	365.00	730.00
37	Supplying, erecting and marking four pole isolators only switch version of miniature circuit breakers of 40 A in provided distribution board complete.	2	NOS.	625.00	1250.00

TOTAL AMOUNT= 73107.00

MEASUREMENT SHEET

**PROPOSED CONSTRUCTION OF MACHINERY SHEAD FOR THE "DIVIT FARMER PRODUCER COMPANY LIMITED",
AT-MOHADI, TAH. MAUDA & DIST- NAGPUR . UNDER Hon. BALASAHEB THACKERAY AGRIBUSINESS RURAL
TRANSFORMATION (SMART) PROJECT**

Name of Work :-

MEASURMENTS

Sr no.	SSR Item No.	Item of Work	Nos.	L	B	D	Quantity	Units
1		2	3	4	5	6	7	
(A) BUILDING WORK								
1	SSR Item No. 21.01 Page No.153 (239.00)	Excavation for foundation in earth, soil of all types, sand gravel and soft murum, including removing the excavated material up to a distance of 50 m beyond the building area and stacking and spreading as directed, dewatering preparing the bed for the foundation and necessary back filing, ramming, watering including shoring and strutting etc complete (Lift upto 1.5 m)						
		<u>Column Pit- C1</u>	12	1.20	1.20	1.40	24.19	Cum
			Total Quantity-				24.19	Cum
2	SSR Item No. 21.40/ Page No.157 (1454.0)	Providing soling using 80 mm size trap metal in 15 cm. layer including filling voids with Crushed sand/grit, ramming. watering etc. complete						
		<u>Column Pit- C1</u>	12	1.20	1.20	0.12	2.07	Cum
			1	9.00	15.23	0.12	16.45	Cum
			Total Quantity-				18.52	Cum
3	SSR Item No. 21.37/ Page No.157 (599.00)	Filing in plinth and floors with contractors material /brought from outside and approved by Engineer incharge in layers of 15 cm to 20 cm including watering and compaction etc complete						
		<u>Below Floor-</u>	1	9.00	15.23	1.00	137.07	Cum
			Total Quantity-				137.07	Cum
4	SSR Item No. 24.01/ Page No.175 (5830.0)	Providing and laying Cast in situ/ Ready Mix cement concrete in M-10 of trap/ granite/ quartzite/ gneiss metal for foundation and bedding including bailing out water, formwork, laying pumping, compacting, roughening them if special finish is to be provided, finishing if required and curing complete with fully automatic micro processor based PLC with SCADA enabled reversible Drum Type mixer/concrete Batch mix plant (Pan mixer) etc complete. With natural sand/V SI quality Artificial Sand						
		<u>For Column Pit-C1</u>	12	1.00	1.00	0.12	1.44	Cum
		<u>Below Floor-</u>	1	9.00	15.23	0.12	16.45	Cum

						Total Quantity-	17.89	Cum
5	SSR Item No. 25.11/ Page No.178 (7104.0)	Providing and laying in situ/ Ready Mix cement concrete M 20 of trap/graniite /quartzite gneiss metal for R.C.C. work in foundations like raft, strip foundations, grillage and footings of R.C.C. columns and steel stanchions etc including balling out water, formwork, laying/pumping cover blocks, compaction and curing roughening the surface if special finish is to be provided (Excluding reinforcement and structural steel) etc. complete, with fully automatic micro processor based PLC with SCADA enabled reversible Drum Type mixer concrete Batch mix plant (Pan mixer) etc. complete. With natural sand/V S. I quality Artificial Sand (SSR Item No. 25.11/ Page No.133) 6666.00						
		For Column Pit-C1	12	1.00	1.00	0.35	4.20	Cum
						Total Quantity-	4.20	Cum
6	SSR Item No. 25.31/ Page No.179 (13783.0)	Providing and laying Cast in situ/Ready Mix cement concrete M-20 of trap/ granite /quartzite gneiss metal for R.C.C. columns as per detailed designs and drawing or as directed including centering, formwork, cover blocks, laying pumping compaction finishing the formed surfaces. with cement mortar 1:3 of sufficient minimum thickness to give a smooth and even surface or roughening if special finish is to be provided and curing etc complete (Excluding reinforcement and structural steel) with fully automatic micro processor based PLC with SCADA enabled reversible Drum Type mixer/ concrete Batch mix plant (Pan mixer) etc complete. With natural sand/V.SI quality Artificial Sand						
		Ground Floor R.C.C. Column-C1	10	0.23	0.35	7.00	5.64	Cum
		Middle Columns	2	0.23	0.35	7.00	1.13	Cum
						Total Quantity	6.76	Cum
7	SSR Item No. 25.50/ Page No.181 (12269.0)	Providing and laying Cast in situ/Ready Mix cement concrete M-20 of trap/ granite /quartzite/ gneiss metal for R.C.C. beams and lintels as per detailed designs and drawings or as directed including centering, formwork, cover blocks, laying/pumping, compaction and roughening the surface if special finish is to be provided and curing etc. complete (Excluding reinforcement and structural steel) with fully automatic micro processor based PLC with SCADA enabled reversible Drum Type mixer/ concrete Batch mix plant (Pan mixer) etc complete With natural sand/V.SI. quality Artificial Sand						

		<u>Plinth Beams</u>	<u>Long Side</u>	2	15.72	0.23	0.40	2.89	Cum
			<u>Deduction for C1</u>	12	0.23	0.23	0.40	0.25	Cum
			<u>Short Side</u>	4	4.50	0.23	0.40	1.66	Cum
			<u>For Ramp</u>	1	3.50	0.23	0.23	0.19	Cum
			<u>Lintel Beams R.S.</u>	1	4.00	0.23	0.45	0.41	Cum
			<u>Long Side</u>	8	3.64	0.23	0.15	1.00	Cum
			<u>Short Side</u>	4	4.50	0.23	0.15	0.62	Cum
			<u>Top Level Beams</u>	2	15.72	0.23	0.40	2.89	Cum
			<u>Short Side</u>	2	9.46	0.23	0.40	1.74	Cum
							Total Quantity	11.66	Cum
8	SSR Item No. 26.05/ Page No.184 (13932.0)	Providing and laying Cast in situ Ready Mix concrete M-20 of trap/ granite/ quartzitel gneiss metal for R.C.C. chajja as per detaliad design and drawings including centering, formwork, cover blocks compacting, curing. finishing and toughening the surface if special finish is to be provided and curing complete. (Excluding reinforcement and structural steel) with fully automatic micro processor based PLC with SCADA enabled reversible Drum Type mixer/ concrete Batch mix plant (Pan mixer) etc complete. With natural sand/Vs1 quality Artificial Sand							
		(SSR Item No. 26.05/ Page No.137) 13111.0							
			<u>Rolling Shutter</u>	1	4.00	1.20	0.10	0.48	Cum
			<u>Anti rat Band</u>	2	15.72	0.60	0.10	1.89	Cum
				2	9.46	0.60	0.10	1.14	Cum
							Total Quantity	3.50	Cum
9	SSR em No. 24.16/ Page No.177 (6359.0)	Prodding and laying Cast in situ/Ready Mix cement concrete M-15 of trap/ granite / quartzite /gneiss metal for coping to plinth or parapet , moulded or chamfered as per drawing or as directed including steel centering, plywood / steel formwork compacting roughening them if special finish is to the provided, finishing uneven and honeycombed surface and curing etc complete The Cement Mortar 1:3 plaster is considered for rendering uneven and honeycombed surface only Newly laid concrete shall be covered by gunny bag, plastic, tarpaulin etc (Wooden centaning will not be allowed)							
		(SSR em No. 24.16/ Page No.132) 6030.00							
			<u>Long walls</u>	2	15.72	0.23	0.10	0.72	Cum
			<u>Short walls</u>	2	9.46	0.23	0.10	0.44	Cum
							Total Quantity	1.16	Cum

10	SSR Item No. 26.33/ Page No.188 (89703.0)	Providing and foong in position TMT-FE-500 bar reinforcement of various diameters for RCC pile caps footings, foundations, stats, beams columns, canopies staircase newels chajjas, litels pardis, copings, fins, wiches Jete an per detailed designs, drawings and schedules including cutting bending, hooking the tiers, biriding with wires or tack welding and supporting as required complete						
		R.C.C. Column Footing	4.00	@	200.00	800.00	Kgs	
		RCC Column	5.00	@	200.00	1000.00	Kgs	
		R.C.C. Beam	3.00	@	200.00	600.00	Kgs	
		R.C.C. Chajjah	3.00	@	200.00	600.00	Kgs	
		Coping to Plinth	2.00	@	200.00	400.00	Kgs	
					Total Quantity-		3400.00	Kgs
					Total Quantity in MT -		3.40	MT
11	SSR Item No. 23.04/ Page No.173 (119459.0)	Providing structural steel work in trusses, other similar trussed purlins and members with all tracing gusset plates eto, as per detailed designs and drawings or as drected including cutting, fabricating, hoisting, erecting fixing in position, Making sivated bolted/welded connection and one cont of anticorrosive paint and over 2 costs of oil painting approved quality and thade etc complete						
		For Trusses	5	@	550.00		2750.00	Kgs
		Purlins & Cleats etc.	4	@	250.00		1000.00	Kgs
					Total Quantity-		3750.00	Kgs
					Total Quantity in MT -		3.75	MT
12	SSR Item No. 38.36/ Page No.237 (1068.0)	Providing and fixing colour coated Zinalume (R) AZ150 (min 150 gms/sq.mt total on each side) profiled sheets for roofing. The feed material is manufactured out of nominal 045 mm Base Metal Thickness (BMT) (0.5 mm TCT), H strength steel with min 550 MPa yield strength, metalic hot dip coated with Aluminium-Zinc alloy (55% aluminium 43 4% zinc 1.6% silicon) with COLORBOND (R) steel quality super durable polyester paint coat (with inorganic pigment). The paint shall have a total coating thickness of nominal 35 um comprising of nominal 25 um exterior coat on top surface and nominal 10 um reverse coat on back surface Profile sheet shall have nom 950-1050 mm effective cover width and nominal 25-30 mm deep ribs with subtle square fluting in the five pan at nominal 180-250 mm center-to-center. The end rib						
			2	16.00	4.80		153.60	Sqm
					Total Quantity-		153.60	Sqm

13	SSR Item No. 27.01/ Page No.197 (7755.00)	Providing second class Burnt Brick masonry with conventional/ S type bricks in cement mortar 1:6 in foundations and plinth of inner walls in plinth edernal walls including bailing out water manually, striking joints on unexposed faces, raking out joints an exposed faces and watering etc. Complete						
		<u>Long walls</u>	2	15.72	0.23	0.80	5.78	Cum
		<u>Deduction for C1</u>	12	0.23	0.23	0.80	0.51	Cum
		<u>Short walls</u>	2	9.46	0.23	0.80	3.48	Cum
						Total Quantity-	9.77	Cum
14	SSR Item No. 27.05 Page No.197 (7994.00)	Providing second class Burnt Brick masonry with conventional/IS type bricks in cement mortar 1:6 in superstructure including striking joints raking out joints, watering						
		<u>Long walls</u>	2	15.72	0.23	6.00	43.39	Cum
		<u>Deduction for C1</u>	12	0.23	0.23	6.00	3.81	Cum
		<u>Short walls</u>	4	4.50	0.23	6.00	24.84	Cum
		<u>Gable End</u>	0	7.50	0.23	1.05	0.00	Cum
		<u>Deduction</u>				Total Quantity-	72.04	Cum
		<u>Rolling Shutters</u>	2	3.00	0.23	3.00	4.14	Cum
		<u>Windows</u>	10	0.90	0.23	0.60	1.24	Cum
						Total Quantity-	5.38	Cum
						Total Quantity-	66.65	Cum
15	SSR Item No. 32.03/ Page No.209 (271.00)	Providing internal cement plaster 12mm thick in single coat. cement mortar 1:5 without neeru finish to concrete or brick surtaces, in all positions including scaffolding and curing etc.						
		<u>Long side</u>	2	15.72		6.00	188.64	Sqm
		<u>Short walls</u>	2	9.46		6.00	113.52	Sqm
		<u>Gable End</u>	0	15.00		1.05	0.00	Sqm
		<u>Deductions</u>				Total Quantity-	302.16	Sqm
		<u>Rolling Shutters</u>	1	3.00		4.00	12.00	Sqm
		<u>Windows</u>	10	0.90		0.60	5.40	Sqm
						Total Quantity-	17.40	Sqm
				Net Quantity-	284.76	Sqm		
16	SSR Item No. 32.06/ Page No.209 (375.00)	Providing interal cement plaster 20mm thick in two coats in cement mortar 1:5 without neeru finish, to concrete, brick surface all positions including scaffolding and curing etc. complete						
		<u>Long Side</u>	2	15.72		6.00	188.64	Sqm
		<u>Short walls</u>	2	9.46		6.00	113.52	Sqm
		<u>Gable End</u>	0	15.00		1.05	0.00	Sqm
		<u>Middle Columns</u>	0	1.06		6.00	0.00	Sqm
		<u>Deductions</u>				Total Quantity-	302.16	Sqm
		<u>Rolling Shutters</u>	1	3.00		4.00	12.00	Sqm
		<u>Windows 1/2</u>	10	0.90		0.60	5.40	Sqm
						Total Quantity-	17.40	Sqm
						Net Quantity-	284.76	Sqm

17	SSR Item No.39.20/ Page No. 247 (4874.0)	Providing and fixing steel window of various sizes as per detaled drawing without hot dip zinc coating without ventilators.						
		M.S. Windows /ventilators	10	0.90		0.60	5.40	Sqm
					Total Quantity-	6.48	Sqm	
18	SSR Item No. 39.25 Page No. 249 (5308.0)	Providing and Fixing rolling shutter fabricated from steel laths ofminimum thickness 0.9 mm with lock plate of 3.15 im thickness red with 35 x 35 x 5 mm angle section had with sliding bet and handles for both sides, deep MS channel section of eph and hickness hot less than 65 mint and 3.15 mm respectively with hond at aangements MS. Bracket plate 300 x 300 x 3. 15 mm male and shape with square bar, suspension shaft of in 32 mm diameter, hood Cover of M.S. sheet not less than 0.9 mm thickness and of any size at top and safety devices including mechanical gear operation arrangement consisting of worm gear wheels and warms high grade cast iron or mid steel and one coat of red lead primer etc. complete (I.S. 62481979) (Without mechanical near)						
			1	3.12		4.00	12.48	Sqm
					Total Quantity-	12.48	Sqm	
19	SSR Item No. 40.01/ Page No. 264 (2097.0)	Providing and fixing mild steel grill work for windows , ventilators etc. 20kg/Sqm as per drawing including fixtures, necessary welding and painting with one coats of anticorrsvie paint and two coats of all painting complete.						
			10	0.90		0.60	5.40	Sqm
					Total Quantity-	5.40	Sqm	
20	SSR Item No. 33.15 Page No. 214 (594.00)	Providing and lying cement concrete flooring 40mm thick with M15cement concrete laid to proper level and slope in alternate bays including compactions, fitting joints, marking lnes to give the appearance of tiles of 30cmx 30cm or other site laid dagonaly square atc. Sishing smooth (with extra cement in any colour as directed and curing etc. complete. With Natural Sand						
		<u>Godown</u>	1	9.00	15.23		137.07	Sqm
		<u>Ramps</u>	1	3.00	3.00		9.00	Sqm
					Total Quantity-	146.07	Sqm	
21	SSR Item No. 35.14/ Page No. 224 (78.0)	Providing and applying three coats of water proof cement paint of approved manufacture and of approved colour to new plastered surfaces including scaffolding if necessary, cleaning and preparing the surface, watering for two days etc. complete.						
		12 mm Plaster					284.76	Sqm
		20 mm Plaster					284.76	Sqm

					Total Quantity-	569.52	Sqm
--	--	--	--	--	-----------------	--------	-----

RATE ANALYSIS

**PROPOSED CONSTRUCTION OF MACHINERY SHEAD FOR THE "DIVIT FARMER PRODUCER COMPANY LIMITED",
AT-MOHADI, TAH. MAUDA & DIST- NAGPUR . UNDER Hon. BALASAHEB THACKERAY AGRIBUSINESS RURAL
TRANSFORMATION (SMART) PROJECT**

RATE ANALYSIS.

SR.N O.	SSR Item No.	DESCRIPTION OF ITEM	QTY.	NET LEAD CHARGES	RATE
1	SSR Item No. 21.01 Page No.153 (239.00)	Excavation for foundation in earth, soil of all types, sand, gravel and soft murum , including removing the excavated material up to a distance of 50 m. beyond the building area & stacking and spreading as directed, dewatering, preparing the bed for the foundation and necessary back filling, ramming, watering including shoring and strutting etc. complete. (Lift upto 1.5 m.) By Mechanical Means			239.00
				TOTAL RATE Rs.	239.00 PerCu.M.
2	SSR Item No. 24.01/ Page No.175 (5830.0)	Providing and laying Cast in situ/Ready Mix cement concrete in M-10 of trap/ granite/ quartzite/ gneiss metal for foundation and bedding including bailing out water, formwork, laying/pumping, compacting, roughening them if special finish is to be provided, finishing if required and curing complete, with fully automatic micro processor based PLC with SCADA enabled reversible Drum Type mixer/concrete Batch mix plant (Pan mixer) etc. complete. With fine aggregate (Natural Sand / Crushed sand VSI Grade finely washed etc)			
				0	5830.00
					-116.60
					-349.80
					5363.60
				0.22000	282.91
				0.47000	888.61
				0.24000	888.61
				0.70000	851.59
				0.70000	0.00
				0.24000	-54.00
				0.00000	-54.00
				0.47000	0.00
					116.60
				TOTAL RATE Rs.	6756.51 PerCu.M.
3	SSR Item No. 21.40/ Page No.157 (1454.0)	Providing soling using 80 mm size trap metal in 15 cm. layer including filling voids with Crushed sand/grit, ramming, watering etc. complete			1454.00
					1454.00
				1.00000	851.59
				0.15000	888.61
					851.59
					133.29

	@ADD DIFF.COST FOR SAND	0.15000	0.00	0.00	
		TOTAL RATE Rs.		2438.88	PerCu.M.
4	SSR Item Providing and laying in situ/Ready Mix cement concrete M-20 of trap / granite /quartzite/ gneiss metal for R.C.C. work in foundations like raft, strip foundations, grillage and footings of R.C.C. columns and steel stanchions etc. including bailing out water, formwork, laying/pumping cover blocks, compaction and curing roughening the surface if special finish is to be provided (Excluding reinforcement and structural steel) etc. complete, with fully automatic micro processor based PLC with SCADA enabled reversible Drum Type mixer/ concrete Batch mix plant (Pan mixer) etc. complete. With fine aggregate (Natural Sand / Crushed sand VSI Grade finely washed etc)				
				7104.00	
	DEDUCT 2% OF LABOUR AMENITIES/CESS			-142.08	
	DEDUCT 6% FOR NON SCADA			-426.24	
				6535.68	
	ADD LEAD CHARGES FOR CEMENT	0.35000	282.91	99.02	
	ADD LEAD CHARGES FOR SAND	0.42500	888.61	377.66	
	ADD LEAD CHARGES FOR CR METAL	0.85000	888.61	755.32	
	@ADD DIFF.COST FOR 20MM METAL	0.57000	-54.00	-30.78	
	@ADD DIFF.COST FOR 12MM METAL	0.28000	-54.00	-15.12	
	@ADD DIFF.COST FOR SAND	0.42500	0.00	0.00	
	ADD 2% OF LABOUR AMENITIES/CESS			142.08	
		TOTAL RATE Rs.		7863.86	PerCu.M.
5	SSR Item Providing and laying Cast in situ/Ready Mix cement concrete M-20 of trap / granite /quartzite/ gneiss metal for R.C.C. columns as per detailed designs and drawing or as directed including centering, formwork, cover blocks, laying/pumping, compaction finishing the formed surfaces with cement mortar 1:3 of sufficient minimum thickness to give a smooth and even surface or roughening if special finish is to be provided and curing etc. complete,(Excluding reinforcement and structural steel). with fully automatic micro processor based PLC with SCADA enabled reversible Drum Type mixer/ concrete Batch mix plant (Pan mixer) etc. complete. With fine aggregate (Natural Sand / Crushed sand VSI Grade finely washed etc)				
				13783.00	
	DEDUCT 2% OF LABOUR AMENITIES/CESS			-275.66	
	DEDUCT 6% FOR NON SCADA			-826.98	
				12680.36	
	ADD LEAD CHARGES FOR CEMENT	0.35000	282.91	99.02	
	ADD LEAD CHARGES FOR SAND	0.42500	888.61	377.66	
	ADD LEAD CHARGES FOR CR METAL	0.85000	888.61	755.32	
	@ADD DIFF.COST FOR 20MM METAL	0.57000	-54.00	-30.78	
	@ADD DIFF.COST FOR 12MM METAL	0.28000	-54.00	-15.12	

	@ADD DIFF.COST FOR SAND	0.42500	0.00	0.00
	ADD 2% OF LABOUR AMENITIES/CESS			275.66
		TOTAL RATE Rs.		14142.12 PerCu.M.
6	SSR Item Providing and laying Cast in situ/Ready Mix cement concrete M-20 of trap / granite /quartzite/ gneiss metal for R.C.C. beams and lintels as per detailed designs and drawings or as directed including centering, formwork, cover blocks, laying/pumping, compactionand roughening the surface if special finish is to be provided and curing etc. complete. (Excluding reinforcement and structural steel). with fully automatic micro processor based PLC with SCADA enabled reversible Drum Type mixer/ concrete Batch mix plant (Pan mixer) etc. complete. With fine aggregate (Natural Sand / Crushed sand VSI Grade finely washed etc)			12269.00
	DEDUCT 2% OF LABOUR AMENITIES/CESS			-245.38
	DEDUCT 6% FOR NON SCADA			-736.14
				11287.48
	ADD LEAD CHARGES FOR CEMENT	0.35000	282.91	99.02
	ADD LEAD CHARGES FOR SAND	0.42500	888.61	377.66
	ADD LEAD CHARGES FOR CR METAL	0.85000	888.61	755.32
	@ADD DIFF.COST FOR 20MM METAL	0.57000	-54.00	-30.78
	@ADD DIFF.COST FOR 12MM METAL	0.28000	-54.00	-15.12
	@ADD DIFF.COST FOR SAND	0.42500	0.00	0.00
	ADD 2% OF LABOUR AMENITIES/CESS			245.38
		TOTAL RATE Rs.		12718.96 PerCu.M.
7	SSR em Prodding and Mying Cast in situ/Ready Mix cement concrete M-15 of trap/ granite/quartzite/gneiss metal for coping to plinth or parapet, moulded or chamfered as per drawing or as directed including steel centering, plywood/ steel formwork compacting roughening them if special tirish is to the provided, finishing uneven and honeycombed surface and curing etc complets The Camant Mortar 13 plaster is consideraid for rendering uneven and honeycombed surface only Newly laid contiste shall be covered by gimny bag, plastic, tarpaulin etc (Woodet centaning will not be allowed)			6359.00
	DEDUCT 2% OF LABOUR AMENITIES/CESS			-127.18
	DEDUCT 6% FOR NON SCADA			-381.54
				5850.28
	ADD LEAD CHARGES FOR CEMENT	0.35000	282.91	99.02
	ADD LEAD CHARGES FOR SAND	0.42500	888.61	377.66
	ADD LEAD CHARGES FOR CR METAL	0.85000	888.61	755.32
	@ADD DIFF.COST FOR 20MM METAL	0.57000	-54.00	-30.78
	@ADD DIFF.COST FOR 12MM METAL	0.28000	-54.00	-15.12
	@ADD DIFF.COST FOR SAND	0.42500	0.00	0.00
	ADD 2% OF LABOUR AMENITIES/CESS			127.18

		TOTAL RATE Rs.	7163.56	PerCu.M.
8	SSR Item	Providing and laying Cast in situ Ready Mix cement concrete M-20 of trap/ granite/ quartzitel gneiss metal for R.C.C. chajja as per detailed design and drawings including centering, formwork, cover blocks compacting, curing. finishing and toughening the surface if special finish is to be provided and curing complete. (Excluding reinforcement and structural steel) with fully automatic micro processor based PLC with SCADA enabled reversible Drum Type mixer/ concrete Batch mix plant (Pan mixer) etc complete. With natural sand/Vs1 quality Artificial Sand		
	No.			
	26.05/			
	Page			
	No.184			
	(13932.0)			
			13932.00	
			-278.64	
			-835.92	
			12817.44	
			0.35000	282.91
			0.42500	888.61
			0.85000	888.61
			0.57000	-54.00
			0.28000	-54.00
			0.42500	0.00
				278.64
			TOTAL RATE Rs.	14282.18
				PerCu.M.
9	SSR Item	Providing and fixing in position TMT - FE - 500 bar reinforcement of various diameters for R.C.C. pile caps, footings, foundations, slabs, beams columns, canopies, staircase, newels, chajjas, lintels pardis, copings, fins, arches etc. as per detailed designs, drawings and schedules. including cutting, bending, hooking the bars, binding with wires or tack welding and supporting as required complete.		
	No.			
	26.33/			
	Page			
	No.188			
	(89703.0)			
			89703.00	
			1.00000	282.91
			TOTAL RATE Rs.	89985.91
				PerM.T.
10	SSR Item	Providing second class Burnt Brick masonry with conventional/ I.S. type bricks in cement mortar 1:6 in foundations and plinth of inner walls/ in plinth external walls including bailing out water manually , striking joints on unexposed faces, raking out joints on exposed faces and watering etc. Complete.		
	No.			
	27.01/			
	Page			
	No.197			
	(7755.00)			
			7755.00	
			-155.10	
			7599.90	
			0.07900	282.91
			0.32000	888.61
			0.47500	436.28
			0.32000	425.00
			475.000	0.00
				22.35
				284.36
				207.23
				136.00
				-332.50

					155.10
				TOTAL RATE Rs.	8072.44 PerCu.M.
11	SSR Item	Filing in plinth and floors with contractors material/brought from			
	No.	outside and approved by Engineer incharge in layers of 15 cm to			
	21.37/	20 cm including watering and compaction etc complete			
	Page				
	No.157				599.00
	(599.00)				
		ADD LEAD CHARGES FOR MURUM-HARD	1.00000	252.22	252.22
		@ADD DIFF.COST FOR MURUM-HARD	1.00000	0.00	0.00
					851.22 PerCu.M.
12	SSR Item	Providing second class Burnt Brick masonry with conventional/IS			
	No. 27.05	type bricks in cement mortar 1:6 in superstructure including			
	Page	striking joints raking out joints, watering			
	No.197				
	(7994.00)				7994.00
		DEDUCT 2% OF LABOUR AMENITIES/CESS			<u>-159.88</u>
					7834.12
		ADD LEAD CHARGES FOR CEMENT	0.07900	282.91	22.35
		ADD LEAD CHARGES FOR SAND	0.32000	888.61	284.36
		ADD LEAD CHARGES FOR BRICKS	0.47500	436.28	207.23
		@ADD DIFF.COST FOR SAND	0.32000	0.00	0.00
		@ADD DIFF.COST FOR BRICKS	475.000	0.00	-332.50
		ADD 2% OF LABOUR AMENITIES/CESS			159.88
					8175.44 PerCu.M.
13	SSR Item	Providing internal cement plaster 12mm thick in single coat.			
	No.	cement mortar 1:5 without neeru finish to concrete or brick			
	32.03/	surfaces, in all positions including scaffolding and curing etc.			
	Page				
	No.209				271.00
	(271.00)				
		DEDUCT 2% OF LABOUR AMENITIES/CESS			<u>-5.42</u>
					265.58
		ADD LEAD CHARGES FOR CEMENT	0.00350	309.00	1.08
		ADD LEAD CHARGES FOR SAND	0.00760	888.61	6.75
		@ADD DIFF.COST FOR SAND	0.00760	0.00	0.00
		ADD 2% OF LABOUR AMENITIES/CESS			5.42
					278.83 PerSq.M.
14	SSR Item	Providing internal cement plaster 20mm thick in two coats in			
	No.	cement mortar 1:5 without neeru finish, to concrete, brick			
	32.06/	surface all positions including scaffolding and curing etc.			
	Page	complete			
	No.209				375.00
	(375.00)				
		DEDUCT 2% OF LABOUR AMENITIES/CESS			<u>-7.50</u>
					367.50
		ADD LEAD CHARGES FOR CEMENT	0.00700	282.91	1.98
		ADD LEAD CHARGES FOR SAND	0.01500	888.61	13.33
		@ADD DIFF.COST FOR SAND	0.01500	0.00	0.00

ADD 2% OF LABOUR AMENITIES/CESS

7.50

TOTAL RATE Rs. 390.31 PerSq.M.

- 15 SSR Item Providing and applying three coats of water proof cement paint
No. of approved manufacture and of approved colour to new
35.14/ plastered surfaces including scaffolding if necessary, cleaning and
Page No. preparing the surface, watering for two days etc. complete.
224
(78.0)

78.00

TOTAL RATE Rs. 78.00 PerSq.M.

LEAD, ROYALTY STATEMENT AND LABTESTING SHEETS

PROPOSED CONSTRUCTION OF MACHINERY SHED FOR THE "DIVIT FARMER PRODUCER COMPANY LIMITED",
AT-MOHADI, TAH. MAUDA & DIST- NAGPUR . UNDER Hon. BALASAHEB THACKERAY AGRIBUSINESS RURAL
TRANSFORMATION (SMART) PROJECT

LEAD CHART

SR.NO.	MATERIAL	TYPE OF MATERIAL	LOCATION OF QUARRY	LEAD IN KM.	LEAD CHARGES	INITIAL LEAD CHARGES	NET LEAD CHARGES.
1	CEMENT	MANUAL	Gondia	15.00	282.91	0.00	282.91
2	SAND	MACHINE	Dangurli	30.00	888.61	0.00	888.61
3	CR METAL	MACHINE	Panchgaon	50.00	888.61	0.00	888.61
4	40MM METAL CB	MACHINE	Panchgaon	50.00	851.59	0.00	851.59
5	STEEL	MANUAL	Gondia	15.00	282.91	0.00	282.91
6	BRICKS	MANUAL	Dawwa	3.00	436.28	0.00	436.28
7	MURUM-HARD	MACHINE	M.Q.	5.00	252.22	0.00	252.22
8	SOLLING	MACHINE	LOCAL	10.00	117.03	0.00	117.03

Statement of Frequency and amount of Testing Charges

PROPOSED CONSTRUCTION OF MACHINERY SHED FOR THE "DIVIT FARMER PRODUCER COMPANY LIMITED", AT-MOHADI, TAH. MAUDA & DIST- NAGPUR . UNDER Hon. BALASAHEB THACKERAY AGRIBUSINESS RURAL TRANSFORMATION (SMART) PROJECT

Sr No	Item of work	Quantity	Unit	Rate of Consumption	Qty of Material	Test Details			Rate of Testing	Amount
						Test required	Frequency	No.of Test req.		
1	2	3	4	5	6	7	8	9	10	11
1	Cement Concrete									
	M10	0.00	CUM	1.00	0.00	Compressive Strength	Upto 5 Cum – 1 set	14	690.00	
	M15	0.00	CUM	1.00	0.00		6-15 – 2 sets			
	M20	0.00	CUM	1.00	0.00		16-30 – 3 sets			
							31-50 – 4 sets			
					51 & Above – 4 sets + 1 additional 50 Cum or part there of					
				Total	0.00					9660.00
2	Cement									
	M10	0.00	CUM	3.00	0	Initial setting time	One test for each consignment of 50 MT (1000 bags) or part thereof.	2	3770.00	7540.00
	M15		CUM	6.27	0	Final setting time				
	M20	0.00	CUM	7.10	0	Specific Gravity				
						Soundness				
					Fineness modulus					
				Total Bag	0					
3	Sand									
	M10	0.00	CUM	0.445	0.00	Fineness Modules	At the beginning & if there is change in source	4	1380.00	5520.00
	M15	0.00	CUM	0.425	0.00	Silt & Clay Content				
	M20	0.00	CUM	0.425	0.00					
					Total	0.00				
4	C.B.Metal									
	M10	0.00	CUM	0.94	0.00	Water Absorption	One test per 200 Cum or part hereof	2	2600.00	5200.00
	M15	0.00	CUM	0.85	0.00	Specific Gravity				
	M20	0.00	CUM	0.85	0.00	Impact Value				
					Total	0.00				
5	Bricks		CUM	500	0.00	Water Absorption, Compressive Strength & Efflorescence (Set of 5 Bricks)	At the beginning & if there is change in source	2	2175	4350
				Total	0.00					
6	Steel (upto 16 mm)	0.00	M.T.	1	0.00	Tensile Strength,%Elongation, Yield stress, Wt. per RMT, bend, rebend, proof tests	One test for every 5.0 MT & part thereof for each diameter	1	1275.00	1275
			M.T.	1		Resistance to applied Voltage. (1 Hr. Test) (Set of 2 Bars)		2	1115.00	2230
7	Soft murum	0.00	Cum	1	0.00	Liquid limit & plastic limit	Per test	2	1170.00	2340.00
									Total Rs.	38115.00
For Other Government Organisation Rate Will Be Twice										

PROPOSED CONSTRUCTION OF MACHINERY SHEAD FOR THE "DIVIT FARMER PRODUCER COMPANY LIMITED", AT-MOHADI, TAH. MAUDA & DIST- NAGPUR . UNDER Hon. BALASAHEB THACKERAY AGRIBUSINESS RURAL TRANSFORMATION (SMART) PROJECT

ROYALTY CHARGES STATEMENT

Sr No.	Item	Quantity	Consumption / Unit.	Material quantity
1	MATERIAL:- METAL 40 MM & ABOVE			
	Supplying trap/granite/quartzite/gneiss stone metal of required size by bringing the boulders / Rubble at the road side breaking them to required gradation including conveying the boulders /Rubble and stacking the broken metal etc. complete . (Prior approval of sample stack of broken metal by the Ex. Engineer is necessary the date of approval will form part of the measurements) a)40 mm Metal, By breaking Boulders (Hand broken).	50.000	1.00000	50.000
2	MATERIAL : SAND			
	Providing and laying Cast in situ/Ready Mix cement concrete in M-15	75.000	0.44000	33.000
	Providing and laying Cast in situ/Ready Mix cement concrete in M-20	60.000	0.42000	25.200
	Providing and laying Cast in situ/Ready Mix cement concrete in M-10	55.000	0.46200	25.410
GRAND TOTAL FOR MATERIALS				83.610
3	MATERIAL : METAL 20MM			
	Providing and laying Cast in situ/Ready Mix cement concrete in M-15	75.000	0.88000	66.000
	Providing and laying Cast in situ/Ready Mix cement concrete in M-20	60.000	0.84000	50.400
	Providing and laying Cast in situ/Ready Mix cement concrete in M-10	55.000	0.92400	50.820
	GRAND TOTAL FOR ALL MATERIALS			

ROYALTY CHARGES

SR.NO	MATERIAL	TOTAL QUANTITY	ROYALTY RATE	ROYALTY AMOUNT
1	METAL 40 MM & ABOVE	50.000	216.18	10809.00
2	SAND	83.610	237.37	19846.51
3	METAL 20 MM	167.220	216.18	36149.62

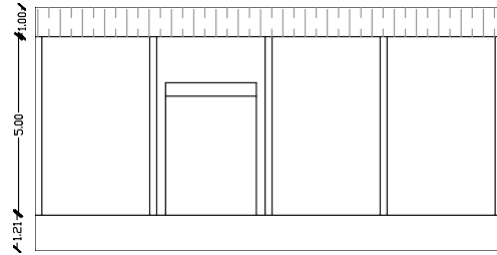
TOTAL:- 66805.13

SAY RS 66805

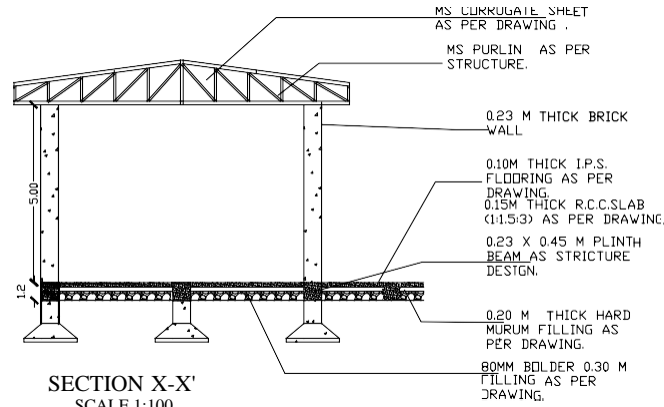
PROPOSED CONSTRUCTION OF MACHINERY SHED FOR THE "DIVIT FARMER PRODUCER COMPANY LIMITED",
 AT-MOHADI, TAH. MAUDA & DIST- NAGPUR . UNDER Hon. BALASAHEB THACKERAY AGRIBUSINESS RURAL
 TRANSFORMATION (SMART) PROJECT

DIFF.COST OF MATERIAL

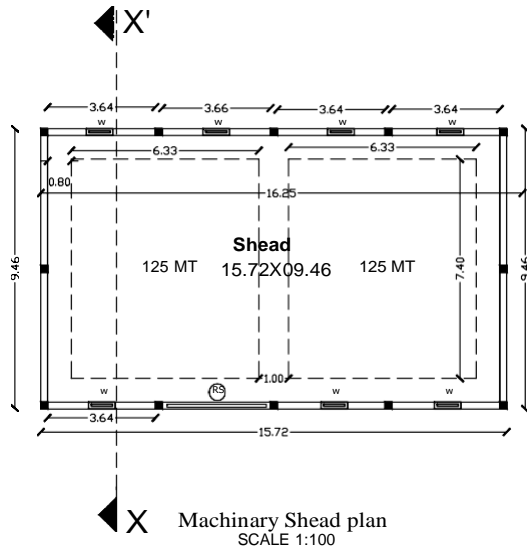
SR.NO.	MATERIAL	RATE AS PER SSR OF 2022- 23	MARKET RATE	EXCESS	LESS	REMARKS/ EFFECTIVE DATE
1	40MM METAL CB	900.00	900.00	0.00	0.00	Rate As On 06/08/22
2	20MM METAL	1050.00	996.00	-54.00	0.00	Rate As On 06/08/22
3	12MM METAL	1050.00	996.00	-54.00	0.00	Rate As On 06/08/22
4	SAND	1670.00	1670.00	0.00	0.00	Rate As On 06/08/22
5	MURUM-HARD	450.00	450.00	0.00	0.00	Rate As On 06/08/22
6	BRICKS	8.50	8.50	0.00	0.00	Rate As On 06/08/22
6	CR SAND	1200.00	1200.00	0.00	0.00	Rate As On 06/08/22



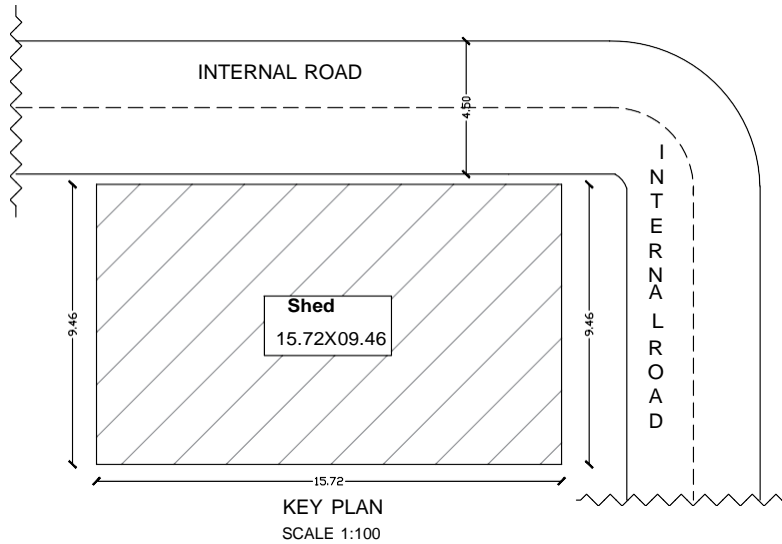
ELEVATION
SCALE 1:100



SECTION X-X'
SCALE 1:100



Machinery Shed plan
SCALE 1:100



KEY PLAN
SCALE 1:100

NOTE
1. ALL DIMENSIONS ARE IN MILLIMETERS UNLESS OTHERWISE SPECIFIED
2. ALL DIMENSIONS SHALL BE CHECKED AND CORELATED WITH THE RELEVANT ARCHITECTURAL & SERVICES DRAWINGS AND ANY AMBIGUITY SHALL BE IMMEDIATELY BROUGHT TO THE NOTICE OF THE ARCHITECTS BEFORE COMMENCEMENT OF THE WORK AT SITE.

SCHEDULE OF OPENING

SN	TYPE	NOS	WIDTH	HEIGHT	SILL	LINTEL	REMARK
1	RS	0	4.100	4900	00	4900	R.SHUTTER

STATEMENT OF AREA

PLOT AREA	SQM
BUILTUP AREA OF GODOWN (COMMERCIAL)	148.72 SQ.MT. [1600.0 SQ.FT.]

CAPACITY (M.T./2.2 SQ.MTR. (CONTAINING GOODS) ----- M.T.

DRG TITLE :- Machinery Shed

PROJECT TITLE :

PROPOSED CONSTRUCTION OF SHEAD FOR THE DIVIT FARMER PRODUCER COMPANY LIMITED, AT- Mohadi TAH. Mauda & , DIST.- NAGPUR . UNDER Hon. BALASAHEB THACKERAY AGRI BUSINESS RURAL TRANSFORMATION (SMART)PROJECT

	NOS	04
	SCALE	AS MENTIONED
	DATE	

ENGINEER SIGN

THIS DRAWING IS THE PROPERTY OF THE ARCHITECT AND NOT TO BE COPIED OR REPRODUCED WITHOUT PERMISSION